

LIVE. LANCE. LIFE.



2018 | TRAVEL TRAILERS | LANCECAMPER.COM

LIVE. LANCE. LIFE.

Because the path before you has yet to be traveled. It smells of fresh air, pine trees and an open fire. It leads to a place characterized less by how you got there and more by moments shared and the memories made.

Has been treading that path for over 50 years with an unparalleled dedication to quality and attention to detail. Privately owned and forged from humble Southern California roots; our journey begins with an industry leading CNC computer designed and cut manufacturing process, complemented by a devotion to utilizing only the most advanced supplies and materials.

Is about searching out all this world has to offer. It can lead you to mountaintops, desert plains or coastal shores. It's about not settling at a desk in a town surrounded by concrete, or settling for the constraints of city lights. ...Don't Settle.



QUALITY

A strong yet lightweight frame structure designed with LanceLock interlocking aircraft-grade aluminum extrusion establishes a solid foundation. Add TPO front caps, composite laminated walls, imported Lite-Ply cabinetry and stainless steel hardware to pull it all together. Lance's quality is truly the result of the sum of its parts.



COMPOSITE CONSTRUCTION

The infusion of durability and ultra-lightweight. Precisely sourced and implemented components meticulously arranged to form one of the best selling most structurally sound and well insulated RVs on the road.



HIGH TECH DESIGN

The precise design begins with Solidworks digital mapping software, implemented by industry leading use of computer numerical code (CNC) machines. This computer guided process ensures your unit's floor plan is not only functional but also strong and ready for a long life on the road ahead.



FOUR SEASONS

Utilize your travel trailer all year long remaining comfortable in extreme heat or cold temperatures with the Lance Four Seasons Certified option that includes along with standard dual pane windows and advanced ducted heating: water heater bypass and winterizing valve, insulated hatch covers and heated holding tanks. (N/A 1475 & 1575)



MODEL 2375 SHOWN IN MIDNIGHT
(Shown w/Available Rear J Lounge)



MODEL 2285 SHOWN IN PASSAGE



MODEL 2295 SHOWN IN PASSAGE

THE LANCE LOOK

No two Lance owners are alike and neither are our residentially influenced decor packages. Personalize your Lance by selecting from one of three tasteful interiors, assembled by an interior design team. Form meets function and your personal style in the refined Roadster, laid-back Passage and edgy Midnight fabric combinations. Featuring stainless appliances; beautiful wood cabinetry complete with residential hardware, spacious sinks and easy to clean flooring.



MODEL 2285 SHOWN IN ROADSTER



MODEL 2185



MODEL 2185



MODEL 1475 SHOWN IN MIDNIGHT (Shown w/Available Sofa Slide)

LANCE ULTRA-LIGHT EDITIONS



MODEL 1475 (Shown w/Available Sofa Slide)

Introducing the New-Look Ultra-Lights. Composite construction melds the worlds of durability and reliability that won't weigh you down. For the past 10 years our lightest weight models have set themselves apart in quality, function and towability and now they are turning heads in style- featuring euro inspired graphics and sleek aerodynamic lines. The new look 1475 & 1575 models offer a stylish option to the owners of smaller SUV and compact truck tow vehicles.



MODEL 1575 (Shown in Roadster)



MODEL 1475 SHOWN IN MIDNIGHT (Shown w/Standard Captains Chairs)

Left: Standard Aluminum Wheels w/Color Keyed Accents and **USA Mfd. Goodyear Radial Tires.**
Right: Standard Lance Sky-View Front Window



MODEL 1575

KEEPING YOU AND YOUR ACCESSORIES CHARGED

On or off the grid, Lance understands the condition of your batteries is critical to the performance and enjoyment of your camper. The ability to properly charge and maintain a charge is a must. The following are key Lance features that ensure maximum battery performance.

A. 12V/USB Charger for Phones/CPAP Machines/Inverters

B. Dual Locking Battery Compartments (N/A 1475 & 1575)

C. Solar Power Options Include: Rooftop Mounted 160W Solar Panel (optional) and Solar on the Side Port for portable solar panel connection (standard)

D. Built in Charger in the Converter

E. Wired to Charge from both Tow Vehicle and Shore Power

F. Solar Panel Charge Monitor and Automatic Controller



STANDARD AND OPTIONAL FEATURES

1. Integrated TPO Gravel Guard w/Hitch Light, Tri-Five Propane Tanks w/Aerodynamic Cover & Electric Tongue Jack
2. Locking Pull Out Dove Tailed Dinette Storage Drawers (N/A 1475 & 1575)
3. Lance Exclusive Bed-Maid System
4. Keyless Entry w/Key Fob
5. Crowned Walk On Roof (N/A 1475 & 1575)
6. Exterior Kitchen – 2295 Only
7. Backup Camera w/Color Display & Sound
8. Power Awning w/LED Light Bar & Direct Response Wind Sensor
9. Aluminum Wheels w/**USA Manufactured Goodyear Radial Tires**
10. LED Lighting Throughout Interior & Exterior Units
11. Pull Out Front Storage Tray
12. Electric Stabilizer Jacks w/Foot Pads
13. Magnetic Exterior Latches
14. Triple Bunks Also Fold Away To Provide Rear Garage Storage Area – 2185 Only
15. Integrated Aerodynamic Rear “Eye Brow” Cap (N/A 1475 & 1575)
16. Keyed Alike System

ADDITIONAL FEATURES:

Visit LanceCamper.com for complete product information including features, specifications, images and dealer locations. Be sure to download the Lance Camper app available through the App Store, Windows Store and Google Play.



ADDITIONAL STANDARD & OPTIONAL FEATURES



Heavy Duty Torsion-Bar Suspension Axles



Available Chassis Lift Kit Provides an Additional 2 5/8" Lift



Convertible Sofa Bed (On Select Models)



Tri-Five LP Tanks w/Aerodynamic Cover (N/A 1475 & 1575)



Exclusive Lance Load Roof Rack System (N/A 1475 & 1575)



Exclusive Lance Life 4' Exterior Table w/Dedicated Storage (N/A 1475, 1575 & 1685)

LANCE LOOK DECORS



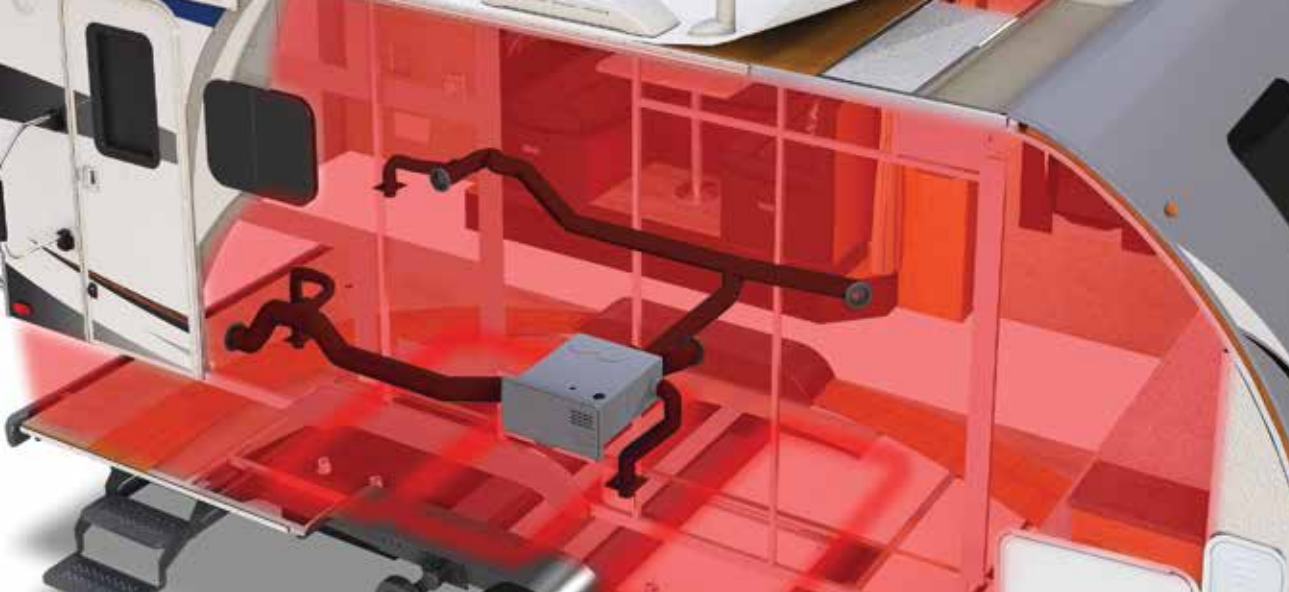
MIDNIGHT



PASSAGE



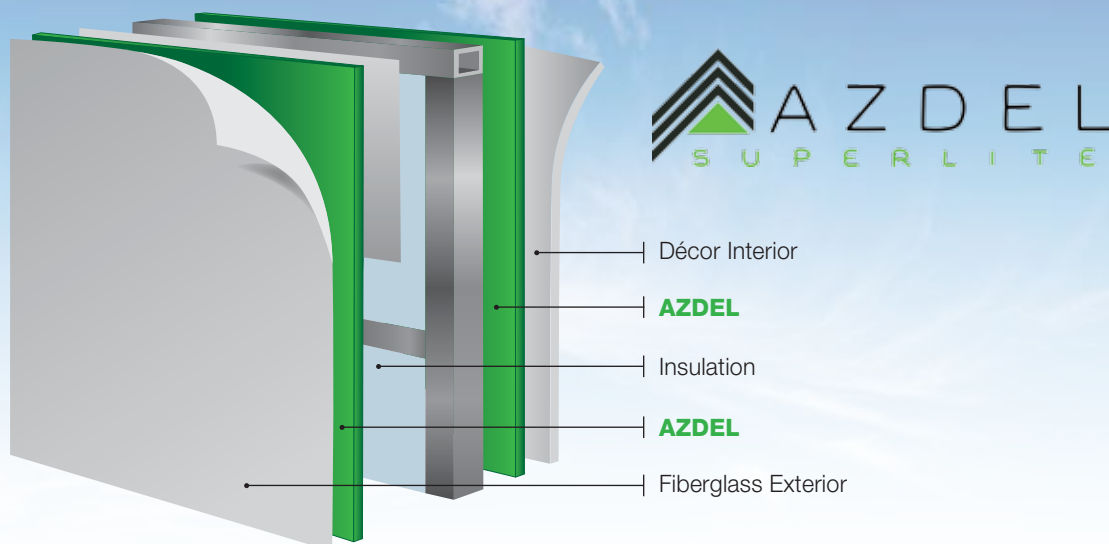
ROADSTER



4 SEASONS CERTIFIED ALL WEATHER PACKAGE (OPTIONAL)

A true four season RV. When your Lance is specially equipped with the 4 Seasons Certified All Weather Package you'll be enjoying your RV all year long. In addition to standard dual-pane windows, block foam insulation and advanced ducted heating; this option includes a water heater bypass/winterizing valve, insulated hatch covers and insulated holding tanks.

The Tri-Five LP Tank Option gives you an additional 5 gallons of propane for a total of 15 gallons of propane capacity to power your LP appliances no matter what the season.



SPECIFICATIONS, STANDARDS & OPTIONS

	1475	1575	1685	1985	1995	2185	2285	2295	2375
Floor Length	14' 10"	15' 9"	16' 6"	18' 9"	19' 2"	21' 2"	22' 6"	22' 6"	23' 6"
Overall Length	19' 8"	20' 5"	21'	23' 3"	23' 8"	25' 8"	27'	27'	28'
Overall Length w/Optional Ladder	N/A	N/A	21' 5"	23' 8"	24' 1"	26' 1"	27' 5"	27' 5"	28' 5"
Width (Exterior)	84 3/8"	84 3/8"	96 3/8"	96 3/8"	96 3/8"	96 3/8"	96 3/8"	96 3/8"	96 3/8"
Height (Exterior) w/Optional 15 A/C	9' 9"	9' 9"	10' 1"	10' 2"	10' 2"	10' 2"	10' 2"	10' 2"	10' 2"
Height (Interior)	78"	78"	78"	78"	78"	78"	78"	78"	78"
Dry Weight*	2500	2650	3805	4045	4080	4380	4740	4640	4900
Hitch Weight*	240	225	405	520	365	730	600	665	550
Axle Rating	3500	3500	5800	5800	5800	5800	6200	6200	7000
Available Axle Capacity**	1240	1075	2400	2275	2085	2150	2060	2225	2650
Cargo Capacity*	1200	1050	1695	1655	1620	1620	1660	1760	2100
GVWR	3700	3700	5500	5700	5700	6000	6400	6400	7000
Fresh Water, Gallons	26	26	45	45	45	45	45	45	45
Grey Water, Gallons	26	26	45	45	45	45	2/45	45	45
Black Water, Gallons	22	25	45	45	45	45	45	45	45
Propane Capacity, Tanks/Gallons	1/5	1/5	2/5	2/5	2/5	2/5	2/5	2/5	2/5
Sleeping Capacity, Min/Opt Max	2/3	4	5	4	4	7	6	4	4/6
Convertible Dinette Bed		46" x 78"	54" x 78"	54" x 78"	54" x 78"	54" x 78"	54" x 78"	54" x 78"	42" x 78"

* Estimates

** When looking at cargo capacity you must consider the hitch weight of the trailer and axle capacity. Hitch weight is actually being hauled while the remaining Trailer weight on the axle(s) is being towed. Example if a trailer has a total weight of 4000 pounds with a 400 pound hitch weight that would mean 3600 pounds is on the axle(s). If the axle weight rating is 5200 for this unit you will have 1600 of axle capacity for cargo.

EXTERIOR

	1475	1575	1685	1985	1995	2185	2285	2295	2375
Laminated Fiberglass Bonded Exterior w/Azdel Substrate	•	•	•	•	•	•	•	•	•
Manual Stabilizer Jacks w/Foot Pad	•	•	•	•	•	•	•	•	•
Electric Stabilizer Jacks w/Foot Pad			0	0	0	0	0	0	0
Electric Tongue Jack (Smart Jack)	0	0	0	0	0	0	0	0	0
Aluminum Wheels w/USA Mfd. Goodyear Radial Tires	•	•	•	•	•	•	•	•	•
Spare Tire Carrier w/Wheel Lug Wrench	•	•	•	•	•	•	•	•	•
Spare Tire	0	0	0	0	0	0	0	0	0
Single Step	•								
Single Aluminum Step		•							
Double Step			•	•	•	•/2	•/2	•	•/2
Aerodynamic Front Section Profile	•	•	•	•	•	•	•	•	•
Fiberglass Front Wrap w/Formed TPO Lower Gravel Guard w/LP Tank Cover	•	•	•	•	•	•	•	•	•
Formed Jewel LED Docking Lights	•	•	•	•	•	•	•	•	•
Rear TPO Eyebrow w/Formed Vertical Side Pillars and Integrated LED Lighting			•	•	•	•	•	•	•
Frameless Full View Dual Pane Tinted Windows			•	•	•	•	•	•	•
Radius Acrylic Tinted Thermopane Euro Windows	•	•							
Large Curved Tinted Front Picture Window (Laminated)				•	•	•	•	•	•
Acrylic Tinted Thermopane Front Euro Window	•	•	•						
Slide-Out End Wall Windows			•	•	•	•	•	•	•
Exclusive Lance Load Roof Rack System			0	0	0	0	0	0	0
Ladder			0	0	0	0	0	0	0
Courtesy Entry Step Well LED Lighting	•	•	•	•	•	•	•	•	•
Keyed-Alike Entry & Storage Compartment Doors	•	•	•	•	•	•	•	•	•
Radius Cornered Storage Compartment Doors w/Magnetic Latches	•	•	•	•	•	•	•	•	•
Large Pass Through Luggage Door w/Slam Latch			•	•	•	•	•	•	•
Radius Entry Door w/Tinted Dual Pane Window			•	•	•	•	•	•	•
Keyless Entry w/Key Fob	0	0	0	0	0	0	0	0	0

Exterior LCD TV Mounting Puck for Optional Bracket

Roof Vent in Living Area & Bed Area

Skylight in Galley/Dinette Area

Exterior Wash Station

Exterior Kitchen

Exterior Propane Connection

Swing-Out Entry Assist Handle

Pull-Out Storage Tray

Exclusive Lance Life 4' Folding Table w/Dedicated Storage Area

Awning Slide-Out Cover

Electric Awning 10' 4" w/LED Lighting

Electric Awning 12' 0" w/LED Lighting

Electric Awning 13' 0" w/LED Lighting

Electric Awning 16' 0" w/LED Lighting

Electric Awning 18' 0" w/LED Lighting

Electric Awning 19' 0" w/LED Lighting

Electric Awning 20' 0" w/LED Lighting

Lift Kit (2 5/8")

Backup Camera w/Wireless Monitor

CONSTRUCTION/INSULATION

One-Piece PVC Roof

One-Piece Fiberglass Roof

Laminated, Insulated Floor and Ceiling

Block Foam Insulation Throughout

Radius Roof Design

Aluminum Framed Floor, Ceiling & Sidewalls

Azdel Interior Panel Walls

All Weather Package

All Weather Package-Includes Enclosed, Insulated & Heated Holding Tanks, Insulated Hatch Covers, Water Heater Bypass & Winterizing Valve



MODEL 1475



MODEL 1575



MODEL 1685

INTERIOR/DECOR

	1475	1575	1685	1985	1995	2185	2285	2295	2375
Interior - Midnight	0	0	0	0	0	0	0	0	0
Interior - Passage	0	0	0	0	0	0	0	0	0
Interior - Roadster	0	0	0	0	0	0	0	0	0
Sofa Bed w/Kick Out Foot Rests								•	0
Sofa Bed Slide Out w/Kick Out Foot Rests & Dual Swivel Tables	0								
Captain Chairs	•/2							0/2	•/2
Surf-X Suedo Solid Surface Lightweight Countertops & Tables	•	•	•	•	•	•	•	•	•
Hardwood Framed Flat Panel Cabinet Doors	•	•	•	•	•	•	•	•	•
Hardwood Raised Panel Cabinet Doors (O'Head Cabinets)			•	•	•	•	•	•	•
Euro Style Overhead Galley Cabinets	•	•							
Decorative Pull Cabinet Hardware	•	•	•	•	•	•	•	•	•
Self Closing Drawer Guides	•	•	•	•	•	•	•	•	•
Lite-Ply Cabinet Construction	•	•	•	•	•	•	•	•	•
Hidden Trash Can Compartment								•	•
Valance Boxes			•	•	•	•	•	•	•
Valances Attached to Interior Window Treatment	•	•							
Mini-Blinds in Living Area, Galley & Bedroom			•	•	•	•	•	•	•
Day/Night Shade in Dinette			•	•	•	•	•	•	•
Combo Screen/Shade on Windows	•	•							
Day/Night Shades for Living Area and Bedroom			0	0	0	0	0	0	0
Entry Door Pull Shade			•	•	•	•	•	•	•
Wall Clock & Key Hanger	•	•	•	•	•	•	•	•	•

GALLEY/APPLIANCES & EQUIPMENT

Flush Mount Stainless Steel 3-Burner Range w/Black Glass Cover	•	•	•	•	•	•	•	•	•
Flush Mount Stainless Steel 3-Burner High Output Range w/Black Glass Cover w/Oven	0	0	0	0	0	0	0	0	0
Stainless Steel "Flat Bottom" Microwave Oven	0	0	0	0	0	0	0	0	0
Refrigerator (Cu Ft) 2-Way Double Door	6	6	6	6	6	6	6	6	6



	1475	1575	1685	1985	1995	2185	2285	2295	2375
Refrigerator (Cu Ft) 3-Way Double Door	5	5							
Upgrade Stainless Steel Refrigerator Door Panels			•	•	•	•	•	•	•
Furnace BTU	18M	18M	25M	25M	25M	25M	25M	25M	25M
Molded LP Tank Cover w/Access Hatch	•	•	•	•	•	•	•	•	•
Tri-Five Propane Tank (Third 5 Gal. Tank w/Holddown)			0	0	0	0	0	0	0
Stainless Steel Range Hood w/Light & Fan	•	•	•	•	•	•	•	•	•
Backsplash	•	•	•	•	•	•	•	•	•
Galley Overhead Accent Puck LED Lighting	•	•	•	•	•	•	•	•	•
Folding Galley Extension				•		•		•	
Single Undermount Sink (Round)	•	•							
Residential Undermount Large Single Sink			•	•	•	•	•	•	•
Pull-Out Sprayer Galley Faucet	•	•	•	•	•	•	•	•	•
Sink Cover	•	•	•	•	•	•	•	•	•
Magazine and Spice Racks - Wood			•	•	•	•	•	•	•

FRESH AND WASTE WATER SYSTEMS

Water Pump w/In-Line Filter	•	•	•	•	•	•	•	•	•
Tankless Water Heater	•								
Water Heater Gas/Electric/DSI (6 Gal.)	•	0	•	•	•	•	•	•	•
Winterizing Valve	•								
Water Heater Bypass and Winterizing Valve	0								
Enclosed, Insulated and Heated Fresh Water Tank	•	•	•	•	•	•	•	•	•

BATHROOM

Porcelain Toilet - Foot Pedal			•	•	•	•	•	•	•
Plastic Toilet - Foot Flush		•							
Plastic Toilet - Hand Flush	•								
Black Tank Flush	•	•	•	•	•	•	•	•	•
Tub		•							
Shower Pan	•	•	•	•	•	•	•	•	•
Medicine Cabinet w/Mirror Door	•	•	•	•	•	•	•	•	•
Mirror on Bath Door	•	•	•	•	•	•	•	•	•
Folding Lavy Extension					•	•			



	1475	1575	1685	1985	1995	2185	2285	2295	2375
Towel Rod on Wall	•	•	•	•	•	•	•	•	•
Towel Ring	•	•	•	•	•	•	•	•	•
Residential Oval Lavy Sink	•	•	•	•	•	•	•	•	•
Residential Radius "Soft" Shower Enclosure	•	•	•	•	•	•	•	•	•
Residential Radius Glass Shower Door Enclosure								•	
Shower Curtain w/Tieback		•							
Skylight - Dual Pane	•	•	•	•	•	•	•	•	•
Ducted Heat	•	•	•	•	•	•	•	•	•

DINETTE

Dinette w/Reversible Cushions	•	•	•	•	•	•	•	•	•
Roll-Out Storage Drawers w/Hardware Latches		•	•	•	•	•	•	•	•

BEDROOM

60" x 80" Deluxe Queen Innerspring Mattress	•	•	•	•	•	•	•	•	•
Bedsread w/Throw Pillows	•	•	•	•	•	•	•	•	•
Convertible Sofa/Queen Bed			0	0	0				
Exclusive Lance Bed-Maid Sleep System	0	0	0	0	0	0	0	0	0
Overhead Cabinet Bunk 28" X 75"		•							
Three Bunk Beds 29" X 75" (Middle Bed Folds Up)							•		
LED Reading Lights	•	•	•	•	•	•	•	•	•
LED Mood Lighting			•	•	•	•	•	•	•
Privacy Curtain		•	•	•	•	•	•	•	•
Privacy Divider Doors					•	•	•	•	•
TV LED 28" (12 Volt)						0	0		

ELECTRICAL

Systems Monitor Panel	•	•	•	•	•	•	•	•	•
12V/USB Charging Port	•	•	•	•	•	•	•	•	•
Battery Condition Indicator - LED	•	•	•	•	•	•	•	•	•
55 Amp Converter/Loadcenter		•	•	•	•	•	•	•	•
45 Amp Converter/Loadcenter	•	•							
LED Interior Lighting - Ceiling	•	•	•	•	•	•	•	•	•

	1475	1575	1685	1985	1995	2185	2285	2295	2375
LED Interior Lighting - Under Overheads	•	•	•	•	•	•	•	•	•
Decorative LED Lighting - S/O Ceiling	•	•	•	•	•	•	•	•	•
Storage Compartment Lighting	•	•	•	•	•	•	•	•	•
Single Battery Compartment (Enclosed)	•	•							
Dual Locking Battery Compartment			•						
Dual Locking Battery Compartments w/Sliding Trays				•	•	•	•	•	•
Battery Disconnect - Manual	•	•	•	•	•	•	•	•	•
Wall Switched Lighting	•	•	•	•	•	•	•	•	•
LED Vanity Lighting Over Medicine Cabinet	•	•	•	•	•	•	•	•	•
Pre-Wired for Roof A/C	•	•	•	•	•	•	•	•	•
A/C - Coleman 9 Low Profile Wall Control	0	0	0	0	0				
A/C - Coleman 13.5 Wall Control	0	0	0	0	0	0	0	0	0
A/C - Coleman 15 Wall Control	0	0	0	0	0	0	0	0	0
Wall Thermostat	•	•	•	•	•	•	•	•	•
Pre-Wired for Fantastic Vent	•	•	•	•	•	•	•	•	•
Fantastic Roof Vent	0	0	0	0	0	0	0	0	0
Power Roof Vent in Bath	•	•	•	•	•	•	•	•	•
Pre-Wired for TV Ant/Park/Sat Cable	•	•	•	•	•	•	•	•	•
TV Antenna HD	•	•	•	•	•	•	•	•	•
AM/FM/DVD/CD/USB Bluetooth Audio System w/App Control	•	•	•	•	•	•	•	•	•
LED TV 28" (12 Volt) w/Bracket	0	0	0		0				
LED TV 32" (12 Volt) w/Bracket				0		0	0	0	0
HDMI LCD/Satellite Receiver Receptacle Wall Plate	•	•	•	•	•	•	•	•	•
Fireplace								0	
LED Patio Light - Switched	•	•	•	•	•	•	•	•	•
LED Hitch Light - Switched	•	•	•	•	•	•	•	•	•
Solar Panel Pre-wire - Roof	0	0	0	0	0	0	0	0	0
Solar on the Side Exterior Charging Port	•	•	•	•	•	•	•	•	•
Solar Panel - 160 Watt - Roof Mount	0	0	0	0	0	0	0	0	0
Exterior 12V/120V Patio Outlet and Entertainment Cable Receptacle	•	•	•	•	•	•	•	•	•
• = Standard Option 0 = Optional Feature									

DESIGN AND CONSTRUCTION



A. The roof is made of energy-star rated Polyvinyl Chloride (PVC) material with vents that clamp in place, eliminating screws and potential leaks. Integrated rain gutters and drip spouts prevent the sides of your trailer from streaking. (N/A 1475 & 1575)

B. Rigid block foam insulation yields maximum "R" value and promotes structural strength.

C. Interiors are constructed of Lite-Ply™ which Lance imports from Europe. This superior product is lighter, formaldehyde free and stronger. Providing both beauty and durability.

D. Keeping it all together are stainless steel fasteners. Unlike our competitors, this expensive hardware resists corrosion making for a lasting investment.

E. High gloss TPO lower front gravel guard with jewel LED lighting is both beautiful and resilient to the abuses of the road while protecting this section of the chassis.

F. All seals use an anti-wicking material to prevent moisture from transferring to the laminate walls.

G. Lance uses more expensive Azdel™ in place of Luan wood, virtually eliminating mold and mildew. It's also lighter, carcinogen and formaldehyde free and has better "R" value for superior insulation.

H. Lance's aluminum framed superstructure provides for an extremely solid trailer that is also lightweight.

I. Heavy duty rubber torsion-bar suspension axles allow for independent articulation, providing a better towing experience off-road in addition to featuring EZ-lube bearings and self adjusting brakes for easy maintenance.

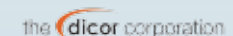
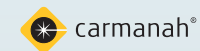
J. Engineered super lightweight, powder coated, tempered steel custom chassis Huck bolt construction eliminates weak and rust-prone welds.

K. Slideout rooms feature smooth, dependable operation. Lighter in weight than other mechanisms, they're also smaller, allowing for more living space.

L. The slick, high gloss fiberglass exterior walls are laminated under intense pressure with heat-setting adhesives for years of trouble-free service.

3D advanced CAD engineering creates precise plans that run CNC machinery. The result is that every part is perfect every time.

KEY SUPPLIER PARTNERS





YOU'RE INVITED TO OUR HOUSE!

Now that you've seen the brochure, we invite you to visit our manufacturing facility. Take a trip to visit us in sunny southern California and see how we have been setting ourselves apart from the competition for 53 years. We realize that buying an RV is a big decision and that it takes time and research. That's why we open our doors to the public for informational-guided tours to see the "quality of precision" first hand. Visit our website to learn more and to schedule a visit soon!

2YEAR
STRUCTURAL LIMITED
WARRANTY

12YEAR
ROOF LIMITED
WARRANTY

Please see lancecamper.com/warranty for details.

2018 LANCE TRAVEL TRAILER BROCHURE ©2018 Lance Camper Mfg. Corp. (LCMC). All rights reserved. Lance, the Lance logomark, the Lance logomark with chevron, The Lance Look, Lance Custom Design, Bed-Maid, LanceLock, ultraDECKplus, ultraSTEPplus, Discover The Lance Difference, Skyview, Lance Load, Lance Life, LIVE. LANCE. LIFE and other exclusive Lance product names, marks or designations are trademarks, service marks or registered trademarks of LCMC. All other marks are property of their respective owners. **All product data, graphics and photography, illustrations and/or renderings in this book were as accurate as possible at press time. Subsequent refinements during the model year may be evident in the actual product. LCMC reserves the right to change prices, colors, materials, equipment and specifications without notice — as well as to add, modify or discontinue models shown in promotion materials and/or on its websites.** All weights, fuel and liquid capacities are approximate and dimensions are nominal. It is the owner's sole responsibility to select the proper Lance model, tow vehicle and tow equipment for safe operation. Your Factory Authorized Lance Dealer can advise you of the operating parameters for your particular configuration, and can confirm prices and product specifications material prior to making your purchase decision. See website for full warranty information. Brochure printed in the USA on FSM paper. 30M. 0817. Rev1.



TOWING & COMPATIBILITY

These are general guidelines to use when matching a trailer to your tow vehicle, assuming standard equipment on your trailer. Whether any travel trailer can be used with your vehicle and its capacities for carrying and/or towing is effected by how much optional equipment is added to the trailer, and the weight of passengers and all other items you carry in your tow vehicle and trailer.

To get an approximate weight of the model of your choice equipped with the optional features you are considering, the

"Build Yours" feature at lancecamper.com is a great resource. Because we're unfamiliar with your tow vehicle, Lance makes no warranties or representation – expressed or implied – as to performance or reliability of your tow vehicle with a Lance trailer. For professional guidance, always consult with your Factory Authorized Lance Dealer. They're trained in properly calculating proper matches between tow vehicles and trailers.

3,500 POUND TOW RATING



Models: 1475, 1575

5,000 POUND TOW RATING



Models: 1475, 1575, 1685, 1985, 1995

6,000 POUND TOW RATING



Models: 1475, 1575, 1685, 1985, 1995, 2185, 2285, 2295

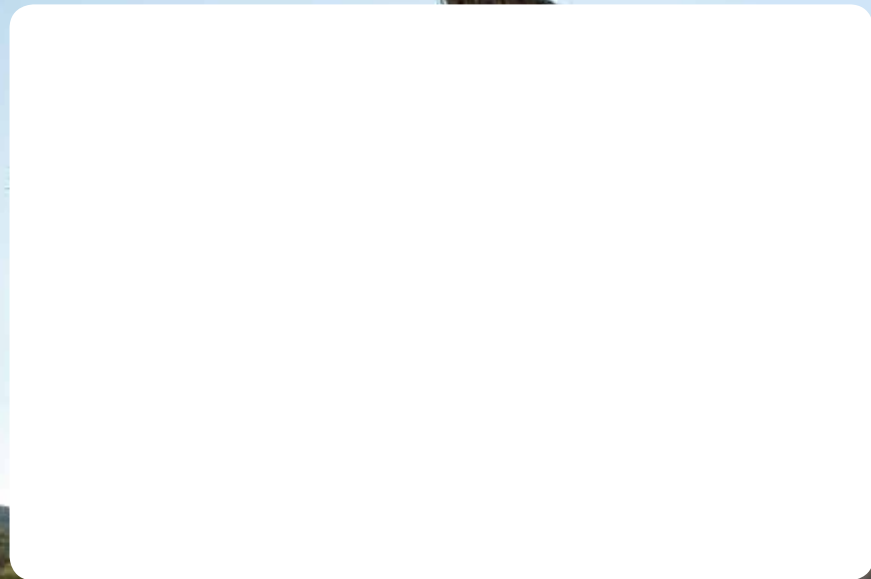
7,000 POUND TOW RATING



Models: 1475, 1575, 1685, 1985, 1995, 2185, 2285, 2295, 2375



LANCECAMPER.COM

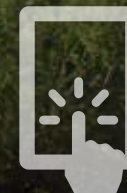


Online:

URL = lancecamper.com/2018

TAKE A GUIDED TOUR

Get to know Lance Campers on your terms!
Get up close and personal with build your own configurator, videos, 360-views, take a virtual plant tour and much more.



App Store:

URL = lancecamper.com/LanceApp



VISIT OUR NATIONAL PARK SYSTEM